

## 規格 Specification

|   |  |          |
|---|--|----------|
| 型號/Model no.  | HLG-3A   | HLG-6A   |
| 壓力調整範圍/Actuating pressure range Mpa                     | 1.0~6.0  | 5.0~18.0 |
| 使用壓力範圍/Operating pressure range Mpa                     | 2.0~35.0   | 6.0~35.0 |
| 調節螺釘壓力變化值 (Mpa/每圈) / Adjusting screw turn ratio Mpa/Rev | 1.0  | 2.8      |
| 閉合壓力(Mpa)/Cracking Pressure                             | 0.01   |          |
| 使用溫度/Operating temperature °C                           | 0~70°C   |          |
| 使用液體/Useable fluid                                      | 相當于ISO粘度等級的ISO-VG-32—般液壓油<br>General hydraulic Oil equivalent to ISO—vg-32 |          |

### 注意事項

1.次側供油量過多時導致不能標準的進行順序動作。  
請在1次側油孔前面安裝內置有單向閥的流量調節閥，或者在油壓源上進行流量控制。



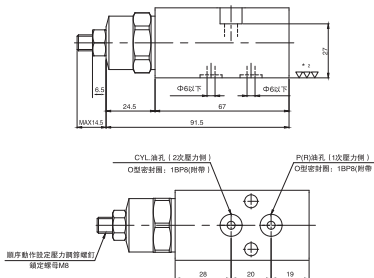
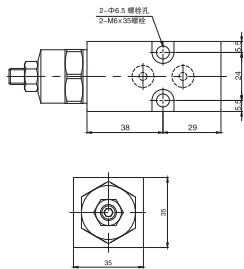
### Matters needing attention

Too much too much of the 1 side of the supply can not be standard in order to carry out the order of action.  
Please install a flow control valve with a check valve in the front of the 1 side of the oil hole, or flow control on the oil pressure source.

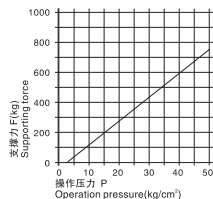
## 訂購標示法 Ordering Code

HLG-3 A(5.0MPa)

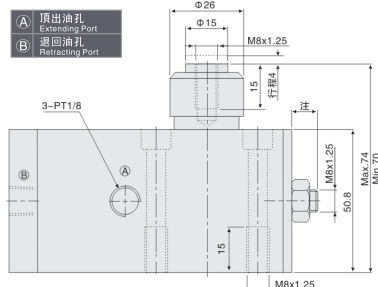
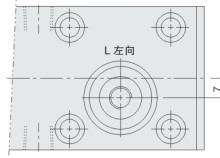
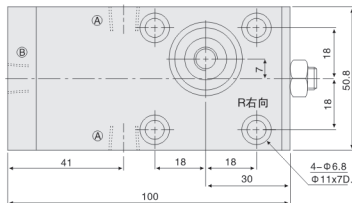
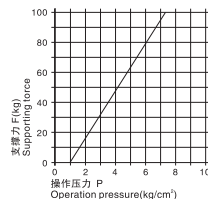
|        |   |  |
|--------|---|--|
| HLG    |   |  |
| 3      | 壓力調整範圍<br>Pressure adjustment range   | 3: 1.0~6.0MPa 6: 5.0~18.0MPa   |
| A      |   | 油路板型式<br>Oil type  |
| 5.0MPa | 設定壓力 (順序動作壓力的設定值)<br>Set the pressure (the set value of the sequential action pressure) | 1.使用壓力與設定壓力的壓差應設定在1MPa以上。<br>2.多黨順序閥并聯于回路中使用時,相互間設定壓力的壓差應在1MPa以上。<br>1. The use of pressure and set the pressure difference should be set at more than 1MPa.<br>2. More than the sequence valve in parallel to the loop in use, mutual setting pressure difference should be more than 1MPa. |



### 油壓 Hydraulic



### 空壓 Air



## 訂購標示法 Ordering Code

HSP AH 18 R A

|   |                                    |   |   |   |  |
|---|------------------------------------|---|---|---|--|
| 1 | 2                                  | 3 | 4   | 5 |  |
| ① | ②                                  | ③ | ④   | ⑤ |  |
| ① | 系列別 Series                         | ② | 空油壓兩用型 Air—hydraulic type   | ③ | 頂杆軸徑 Diameter of the extended piston rod |
| ④ | R右向; L左向 Turn right R; Turn left L | ⑤ | A 彈簧頂出型 A: Spring extended piston<br>B 油壓頂出型 B: Hydraulic extended piston |   |  |

\*注: 附A, B型調整螺絲  
A: 彈簧頂出型, 往內調整  
B: 油壓頂出型, 往外調整  
\*Note: With A, B type adjusting screw.  
A: Spring extended piston rod—adjust outward.  
B: Hydraulic extended piston rod—adjust outward.